

Human LTBR Protein

Cat. No. LTB-HM201

Description

Source	Recombinant Human LTBR Protein is expressed from HEK293 with hFc tag at the C-Terminus. It contains Gln31-Met227.
Accession	P36941-1
Molecular Weight	The protein has a predicted MW of 48.5 kDa. Due to glycosylation, the protein migrates to 60-70 kDa based on Tris-Bis PAGE result.
Endotoxin	Less than 1EU per µg by the LAL method.
Purity	> 95% as determined by Tris-Bis PAGE > 95% as determined by HPLC

Formulation and Storage

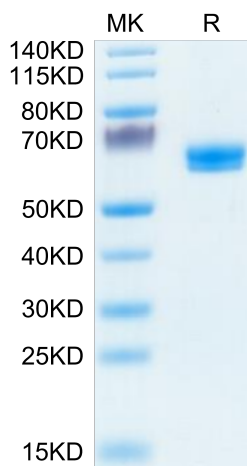
Formulation	Lyophilized from 0.22µm filtered solution in PBS (pH 7.4). Normally 8% trehalose is added as protectant before lyophilization.
Reconstitution	Centrifuge the tube before opening. Reconstituting to a concentration more than 100 µg/ml is recommended. Dissolve the lyophilized protein in distilled water.
Storage	-20 to -80°C for 12 months as supplied from date of receipt. -20 to -80°C for 3-6 months in unopened state after reconstitution. 2-8°C for 2-7 days after reconstitution. Recommend to aliquot the protein into smaller quantities for optimal storage. Please minimize freeze-thaw cycles.

Background

Components of lymphotoxin beta receptor (LTBR)-associated signaling complexes, including TRAF2, TRAF3, NIK, IKK1, and IKK2 have been shown to participate in the coupling of LTBR to NFkappaB. TRAF3 functions as a negative regulator of LTBR signaling via both canonical and non-canonical NFkappaB pathways by two distinct mechanisms. These effects of TRAF3 depletion did not require LTBR signaling and were consistent with autonomous activation of the non-canonical NFkappaB pathway.

Assay Data

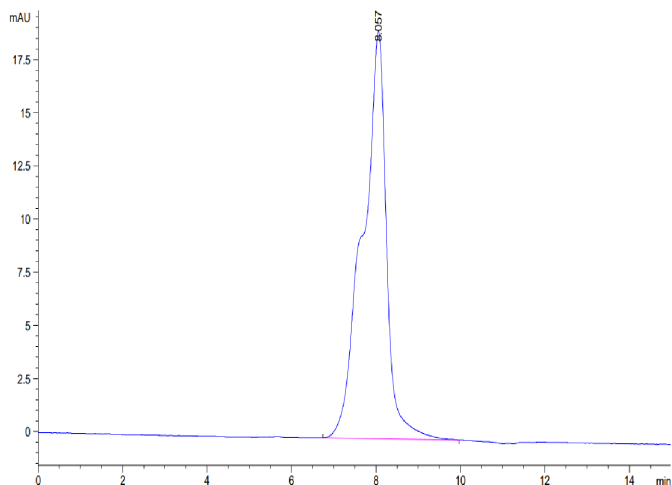
Tris-Bis PAGE



Human LTBR on Tris-Bis PAGE under reduced condition. The purity is greater than 95%.

SEC-HPLC

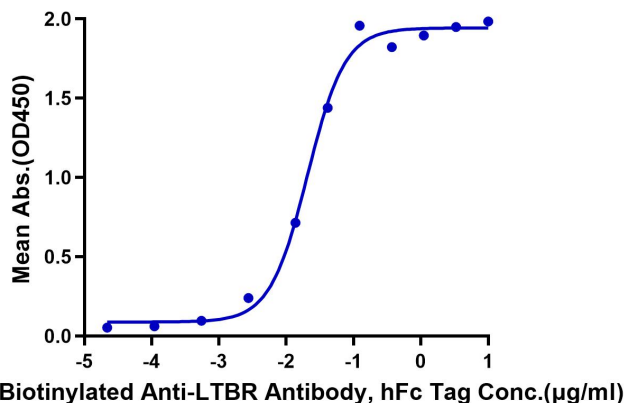
Assay Data



The purity of Human LTBR is greater than 95% as determined by SEC-HPLC.

ELISA Data

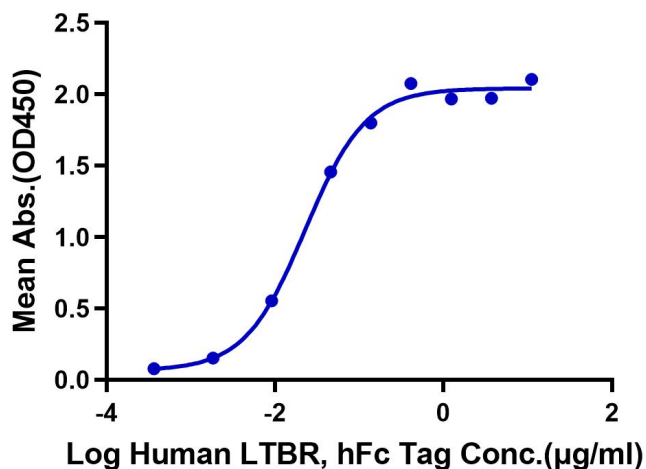
Human LTBR, hFc Tag ELISA
0.05µg Human LTBR, hFc Tag Per Well



Immobilized Human LTBR, hFc Tag at 0.5µg/ml (100µl/Well) on the plate. Dose response curve for Biotinylated Anti-LTBR Antibody, hFc Tag with the EC50 20.7ng/ml determined by ELISA (QC Test).

ELISA Data

Human LTBR, hFc Tag ELISA
0.05µg Human LIGHT, His Tag Per Well



Immobilized Human LIGHT, His Tag at 0.5µg/ml (100µl/Well) on the plate. Dose response curve for Human LTBR, hFc Tag with the EC50 22.9ng/ml determined by ELISA.